

## Exploring Blundells Cottage (side 1)

Here is an activity sheet for the students after their tour of Blundells Cottage is finished. We suggest that the group sits out the front of the cottage after their tour and fill out the answers, that way small groups will be able to come back into the cottage if they need to check their answers.

### Parlour

Which object in the parlour has been made from a kerosene tin? Clue: it is somewhere down low.

\_\_\_\_\_

### Girls' Bedroom

What are the jacks made from?

\_\_\_\_\_

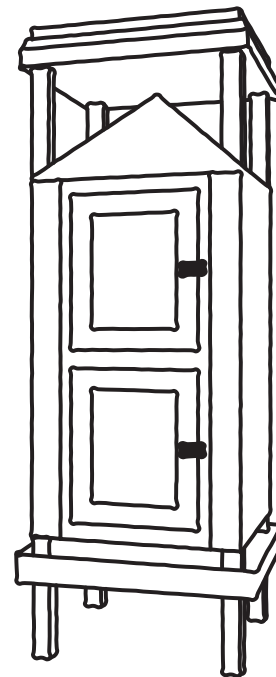
### New Kitchen

Draw an arrow where you would pour the water for the Coolgardie safe.

### Outside

Circle which of these the Blundells did NOT use to bake their bread in the bread oven

fire      bricks      electricity      flour



## Exploring Blundells Cottage (side 2)

Draw a line from each object to the room in Blundells Cottage that they were in.  
Then colour in the different objects.

Parlour

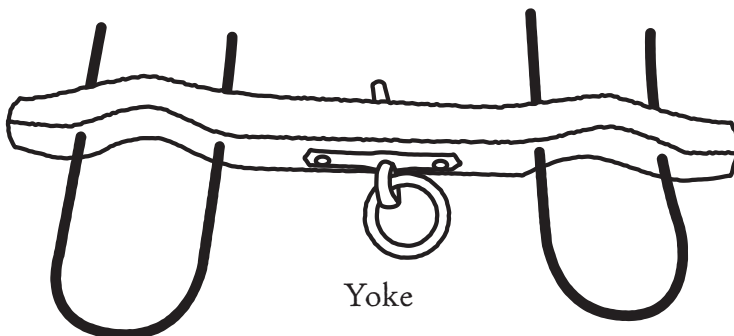
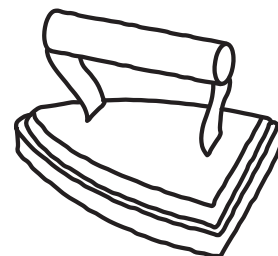
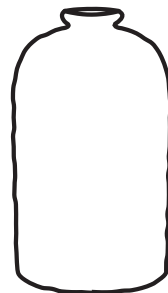
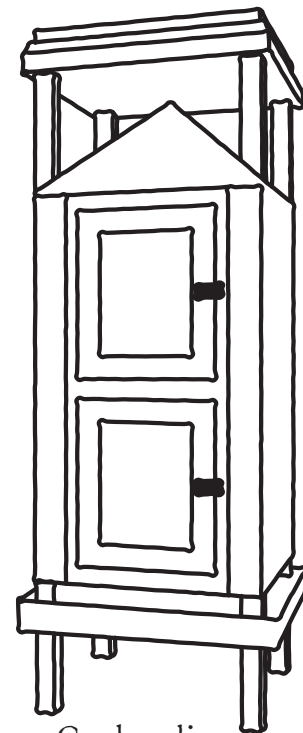
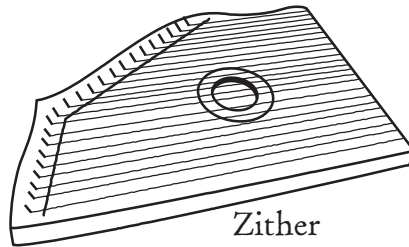
Kitchen

Shed

Display Room/Bath Area

Bedrooms

Hot Water Bottle



# Something Old, Something New

When you visited Blundells Cottage you saw some old-fashioned but very useful things in the kitchen and around the house.

Choose the modern items that have taken their place from the list below and write them next to the item from the cottage. It might help to cross out the modern items as you use them.

*Gas heater, Barbie doll, electric lamp, egg cup, electronic scales, fridge, door mat, modern bath, food processor, plastic wrap, plastic pegs, hot water bottle, electric or gas stove, washing machine, saucepans*

Old

Modern

Boot scraper

Butter churn, whisk, beater

Earthenware hot water bottle ('bed pig')

Hip bath

Fire place

Bread oven

Rag dolls

Kerosene lamp, candles

Jug/food insect covers

Wooden pegs

Tub, wringer, washboard

Iron pots

Egg platter

Balance scales

Coolgardie safe

Can you think of any more?

Visiting Blundells Cottage  
Activity Sheet 3

## Comparing Old and New

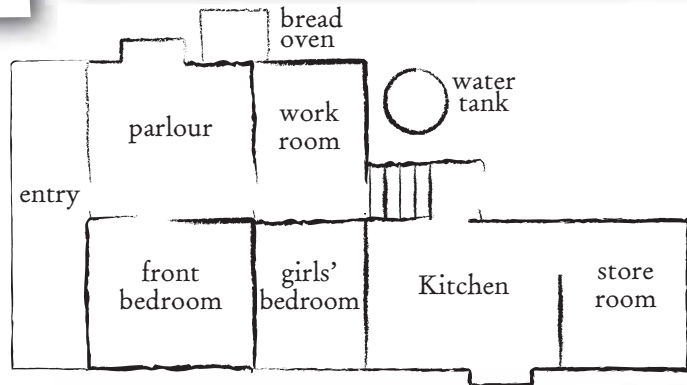
Choose two of the objects from the 'Something Old, Something New' activity and list some of the differences between the old and modern objects.

Objects 1:

Objects 2:

### A Worker's Cottage Plan

Look at the plan of Blundells Cottage. Is this like your house?



In the space below, draw the front of Blundells Cottage.

In the space below, draw one of the rooms in the cottage with items that you saw in the room.